

Collection 2025

Q2

# Prosthetic Fashion for Everybody and Every Body

Tailor-made prosthetic covers



AN\*TOMIC STUDIOS

## One-of-a-kind. Just like you.

For us, it's all about the personal touch. There is no "one size fits all", especially when it comes to expressing who you are. That's why we want to create design that truly highlights the person who will wear it. Through digital craftsmanship, prosthetic know-how, 3D technology and a focus on individual style, we want to give you endless possibilities to add a personal touch to your prosthetic appearance - all our covers are tailored to your unique anatomy, prosthesis and design wishes. Carefully created and with a whole bunch of heart. Always.

### On the cover

Model: Elin Rantatalo (@elin\_rantatalo)

Design: Dew

Color: Champagne gold



taylor-made  
down to the  
last detail







design  
celebrating  
individuality

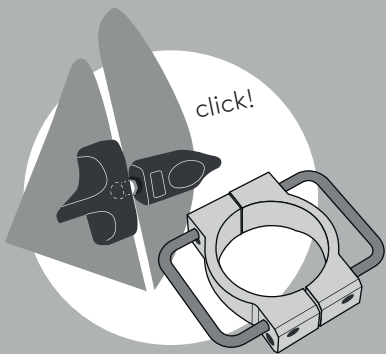


style  
without  
limits



# Latest product news and updates

We continuously refine and expand our product range based on your feedback and evolving needs. Explore the latest product highlights below.



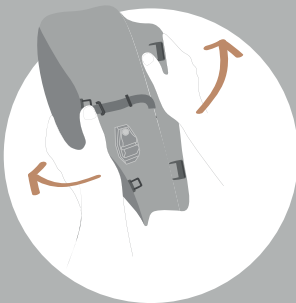
### ATTACHMENT SOLUTION

As a result of the feedback given from clinics and users, our attachment system has developed into an even more refined and durable solution - an aluminum adapter with minimal build height and adjustable steel brackets for alignment changes, paired with a user friendly, button-like mechanism in metal, as side attachments.



### CHARGER GAP

For knees that require charging, we offer the option of adding a gap at the back for instant access to the charging outlet without the need of removing the cover. The charger gap varies in size and shape depending on the prosthetic knee.



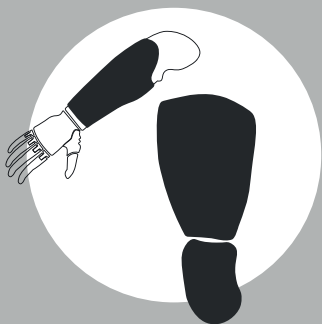
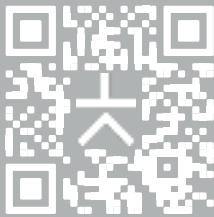
### WRAP COVER

As a result of you giving us more challenging prosthetic setups to design for, we've developed a solution called "wrap". Instead of a front and a back, this cover is made in one single piece with a seam on the side or at the back, making it possible to "wrap" it around the prosthesis.



### SCANNING APP

Use our quick and easy scanning app for iOS, especially developed for our order process. Simply download the app and start scanning and taking photos for the order directly from your phone!



### ARM & THIGH COVERS

We have now launched our first arm covers, designed in the same way as our leg covers with a custom fit for every order. We are also doing more and more thigh cover solutions, matching existing lower leg covers with a top-fit!

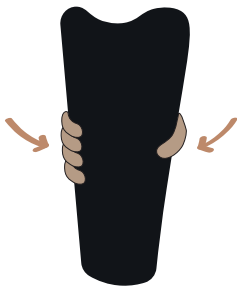
# Hard or Flexible - a material comparison

Our covers are available in two material options: hard or flexible. A common question we receive is "What's the difference?". This quick overview summarizes their key properties. The hard cover is ideal for users who prioritize a specific colour choice and a refined finish. The flexible option offers outstanding durability, impact resistance and freedom of movement, making it a great choice for an active lifestyle.

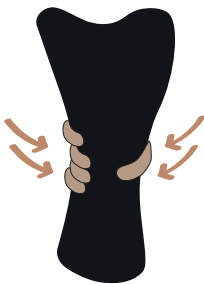
### MATERIAL PROPERTIES

MAIN FEATURES	HARD COVER	FLEXIBLE COVER
DURABILITY	+	+++
ADAPTABILITY	+	++
COLOUR CHOICES	100+	15+
VINYL WRAPPING	YES	YES (smaller decals)
WATER PROOF	YES	YES
DESIGNS	collection + custom	collection + custom

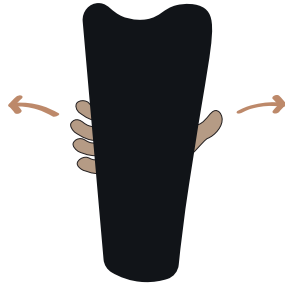
### HOW FLEXIBLE IS THE FLEXIBLE MATERIAL?



Squeeze the cover...



...it will bend from the pressure



...then go back to original shape



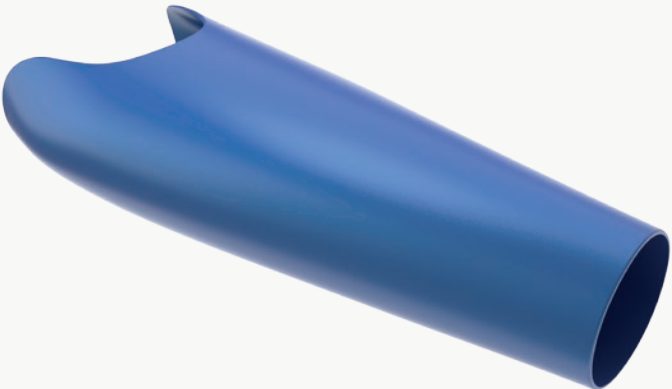
# Introducing Arm Covers

Finally we've released our first, long-awaited prosthetic arm covers! These are tailor-made, just like our leg covers and available in our flexible material with several different designs and colour options.

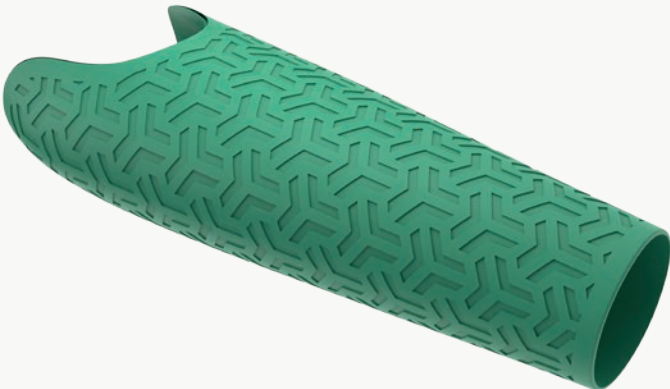




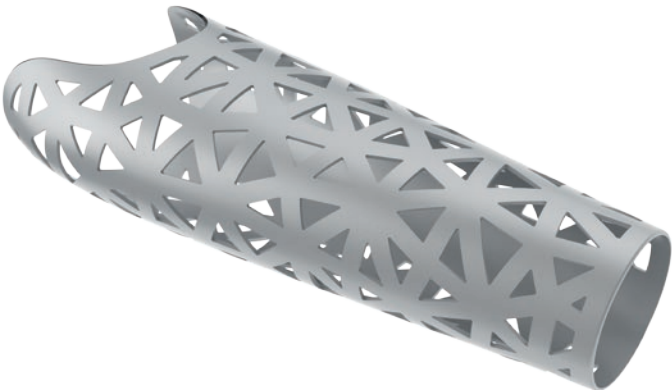
True



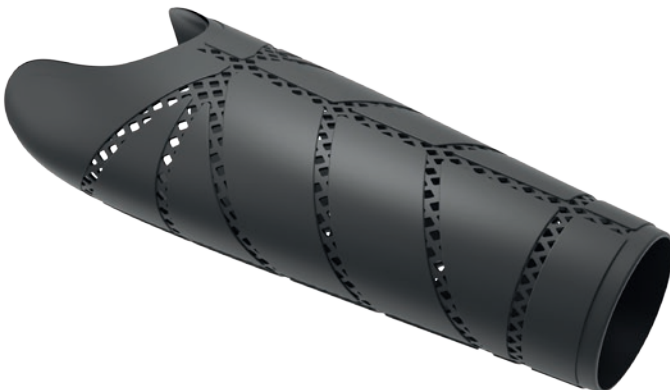
Prime



Mesh



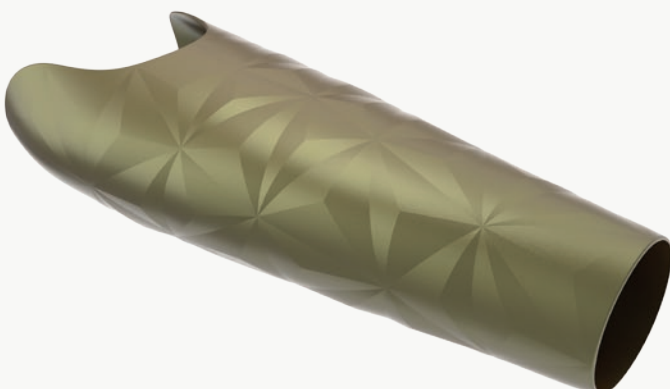
Armour



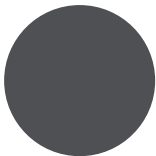
Forma



Prism



Colour options



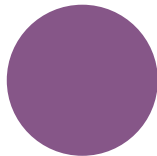
Raw  
grey



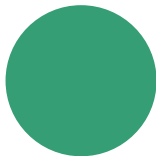
Black  
matte



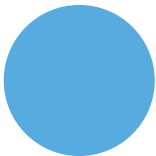
Arctic  
white



Berry  
purple



Grass  
green



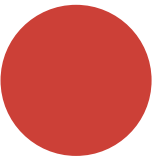
Sky  
blue



Bright  
orange



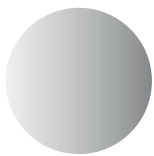
Sunny  
yellow



Pure  
red



Metallic  
blue



Metallic  
silver



Metallic  
gold



Nude  
colours



More colours  
to come



# Prism



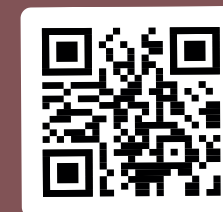
Neya wearing the Prism design in metallic silver.



Reach out to us  
to learn more!

[support@anatomic-studios.com](mailto:support@anatomic-studios.com)

More designs & colours  
added continuously.



[Learn more](#)





# The Leg Collection

Our latest collection is created for all occasions of life. For everyday, for celebrations and everything in between. For you that like stylish simplicity and you who want 'extra everything'. With 16 different designs in a large variety of colours, divided into 4 style categories - Casual, Dressy, Sporty and Statement - we hope that you will find your personal favourite.

Welcome to discover the collection.



# Simply Casual

as design TRUE

Versatile, stylish and timeless – our Casual category features designs created for everyday life and suiting a variety of styles. With a wide range of colour options, you can tailor the expression to perfectly match your personal aesthetic.

## True



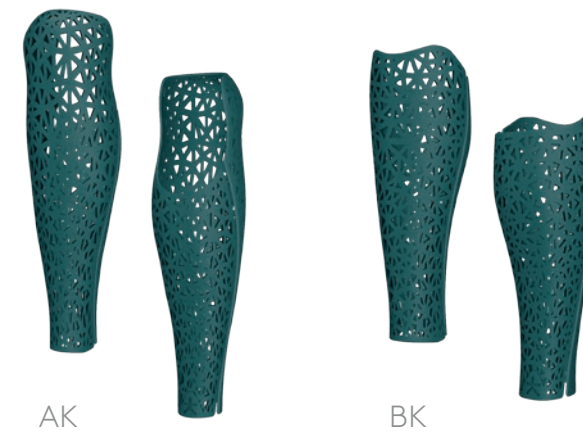
### Hard cover palette



### Flexible cover palette



## Mesh



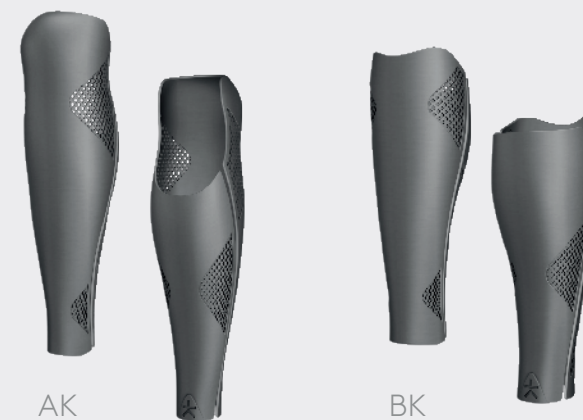
### Hard cover palette



### Flexible cover palette



## Arc



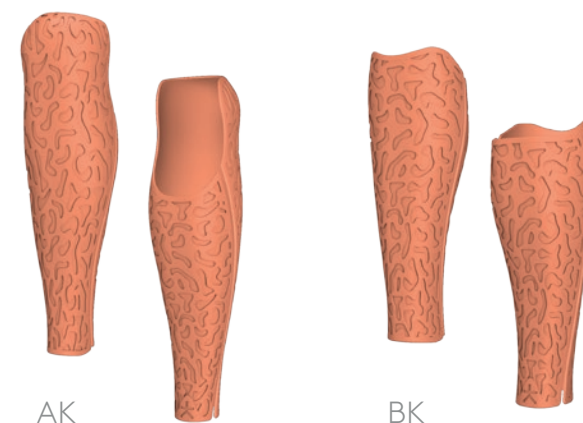
### Hard cover palette



### Flexible cover palette



## Forma



### Hard cover palette



### Flexible cover palette





# Be Dressy

with design LINK

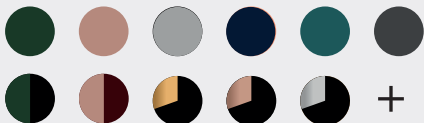


With elements of metallic and leather details, decorative flowers and ornate 3D-decor, our Dressy category is created to elevate a jewelry and accessory feel. These designs are especially suited for celebrations and occasions when you want to feel a little extra elegant and dressed up.

## Link



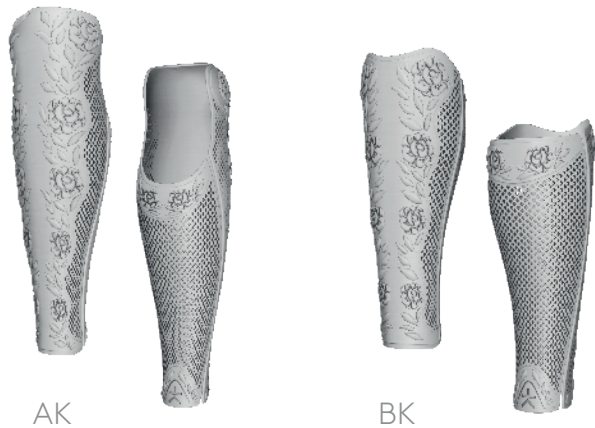
### Hard cover palette



### Flexible cover palette



## Eden



### Hard cover palette



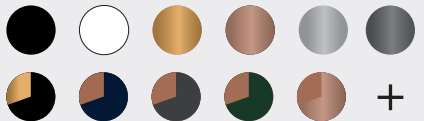
### Flexible cover palette



## Halo



### Hard cover palette



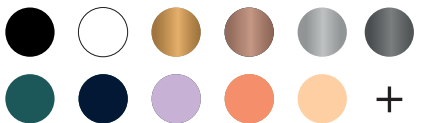
### Flexible cover palette



## Dew



### Hard cover palette



### Flexible cover palette





# Sporty mode

by design APEX

Gym, yoga or outdoor life – this category is created for you who like the sporty style. With elements of textile straps, ribbons and details in various colors, you can effortlessly match our sporty designs with your workout wear or favourite sneakers.

## Apex



Hard cover palette



Flexible cover palette



## Blaze



Hard cover palette



Flexible cover palette



## ID



Hard cover palette



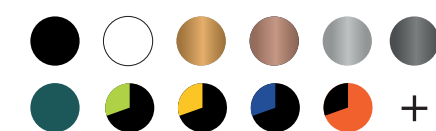
Flexible cover palette



## Prime



Hard cover palette



Flexible cover palette





# Wear a Statement

like design ARMOUR



Bold shapes, intricate details and striking 3D decor – our Statement category is all about attitude. Made for those who like their design with extra everything.

## Armour



AK



BK

### Hard cover palette



### Flexible cover palette



## Phantom



AK



BK

### Hard cover palette



### Flexible cover palette



## Prism

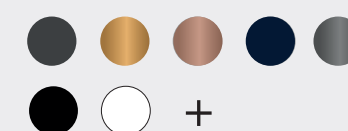


AK



BK

### Hard cover palette



### Flexible cover palette



## Icon

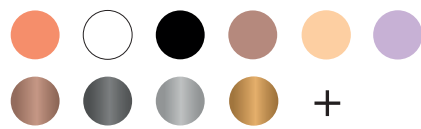


AK



BK

### Hard cover palette



### Flexible cover palette





# Skin Tones

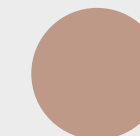
## Flexible Cover



Nude flex  
B



Nude flex  
C



Nude flex  
D



Nude flex  
F

## Hard Cover



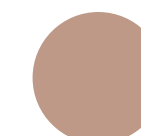
Nude  
A



Nude  
B



Nude  
C



Nude  
D



Nude  
E



Nude  
F

For you who prefer a natural look, our skin tone range offers a refined, subtle aesthetic. Now available for both hard and flexible covers, it includes carefully selected shades designed to complement a variety of skin tones.



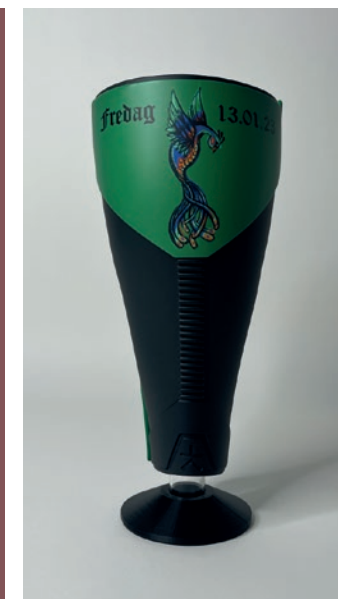
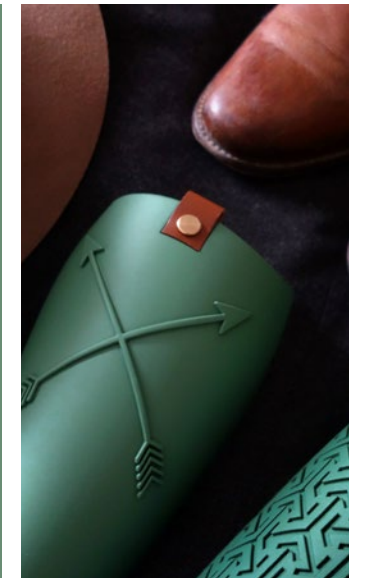
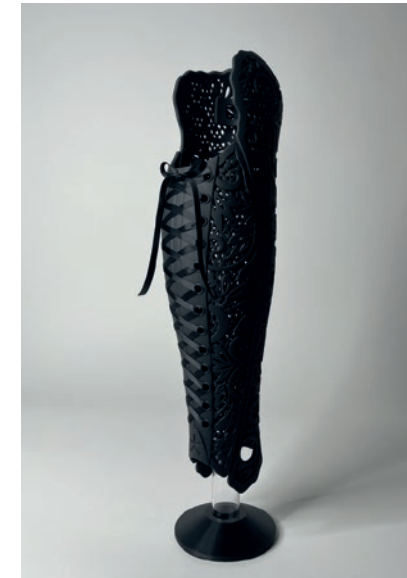
# Custom Design

your imagination sets the limits



A fully customized option where we together bring your own design vision to life. Here, only the imagination sets the limits. We stay in close dialogue with you, where you can share your ideas and inspiration - in text, images, or both. Based on your input, we create a design proposal shaped around your wishes and agree on the details with you before moving on to production of your personalized cover.

Extra features for your custom design:



Find more inspiration on our instagram  
[@anatomic.studios](#)



# Thigh Covers

We're excited to expand our range beyond above and below knee leg covers with the introduction of a custom-fit thigh cover option. It can be used on its own or paired with one of our above-knee designs for a matching setup.

If you're interested in learning more, feel free to reach out – we'd love to chat and explore how this option can fit your needs!







# Thigh cover designs



True



Mesh



Prime



Armour

More designs to come.

# Colour palette flexible



Raw grey



Black matte



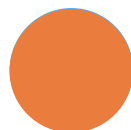
Arctic white



Berry purple



Grass green



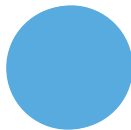
Bright orange



Sunny yellow



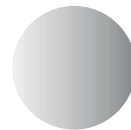
Pure red



Sky blue



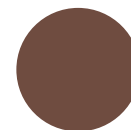
Metallic blue



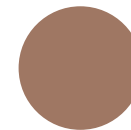
Metallic silver



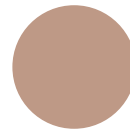
Metallic gold



Nude flex B



Nude flex C



Nude flex D



Nude flex F



unleash  
your  
creativity







add a  
personal  
touch



# How it works

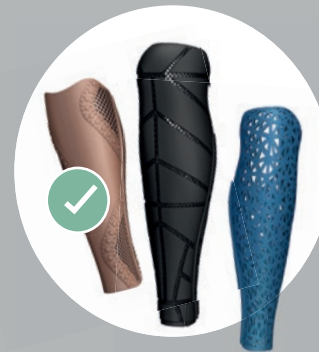
Ever wondered what the process is like from order to delivery? Let's have a look:

Watch our  
instruction  
video



## 1-3: Your work

What does your team - user and prosthetist - need to prepare as a basis for your order?



### 1. DESIGN CHOICE

Pick your design on our website!



### 2. PROSTHETIC INFO

Take 3D-scans (for example with our new scanning app), photos and measurements.



### 3. PLACE ORDER

Send us all the information through our website.

## 4-6: Tailor-made production

How are the covers produced? These are the three main steps for production.



### 4. INDIVIDUAL DESIGN

We do a customized design for your cover, from shape and fit to adapting the pattern.



### 5. DIGITAL PREVIEW

You get a preview on your e-mail to approve.

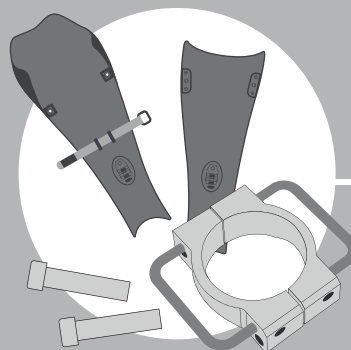


### 6. PRODUCTION

The cover is 3D-printed followed by several steps of careful manual post-processing, painting and finishing.

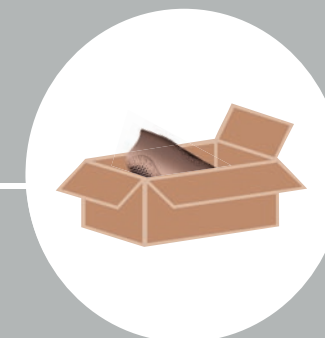
## 7-9: Final touches & delivery

The finishing touches and final steps towards receiving your new cover.



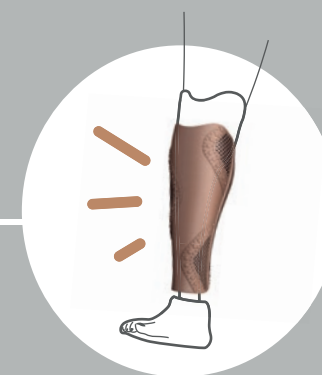
### 7. ASSEMBLY & QUALITY

We assemble the parts, add the final touches and do a quality check.



### 8. PACKING

The finished cover is packaged and sent to you or your clinic.



### 9. DELIVERY

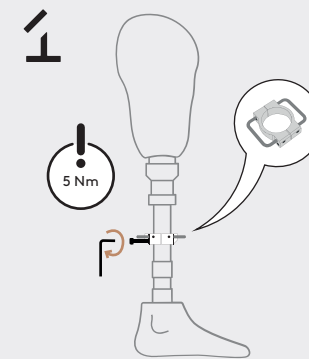
Delivery and mounting on your prosthesis!



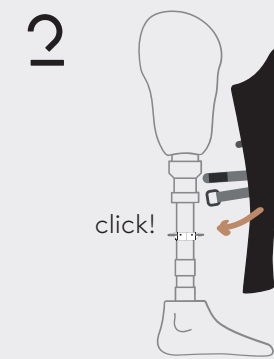


# How to assemble

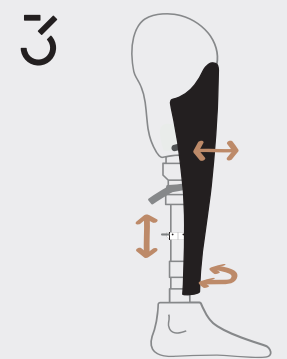
The covers are easy to mount onto the prosthesis. Below you can follow how our standard solution with adapter, side attachments and strap works.



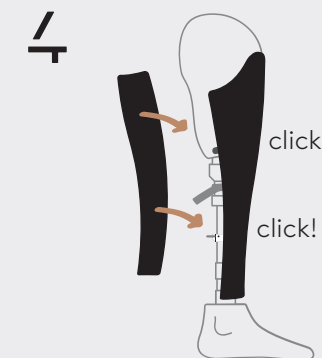
Mount the adapter to the pylon.



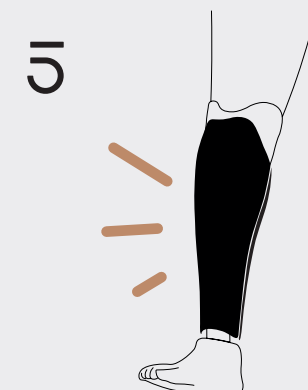
Snap the front to the adapter and tighten the strap around the prosthesis.



If needed, modify the position of the adapter and/or brackets to adjust the cover.



Snap the back to the adapter and the side attachments.



SHOWTIME!



Scan the QR-code for video instructions





DIFFERENT  
FEET



ELEVATED  
BACK



# What do we mean when we say our covers are tailor-made?

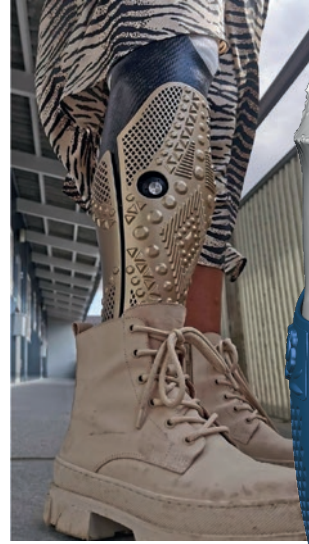
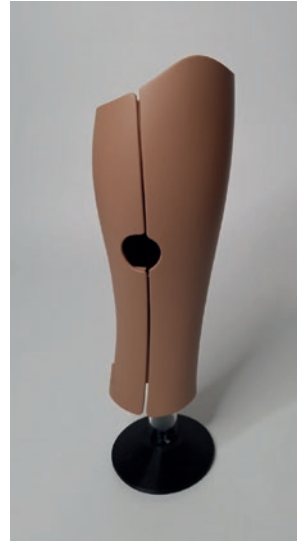
No prosthetic setup looks the same, which is why every cover has its own design journey as we work to find the best solution for each individual user. This means that every order includes at least the following design adaptations:

## For Below Knee

- > customized height and fitting around socket and/or sleeve
- > customization regarding choice of prosthetic foot
- > solutions for valves, pin locks etc.

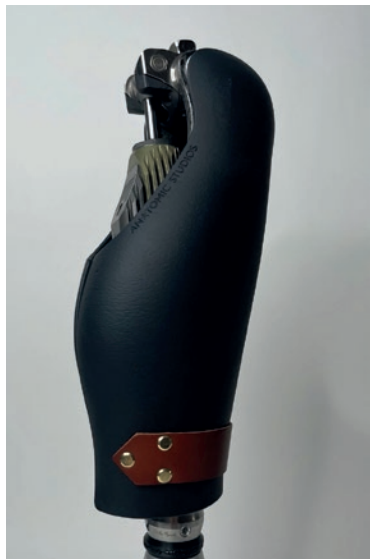
## For Above Knee

- > customized height and shape depending on prosthetic knee
- > customization regarding choice of prosthetic foot
- > solutions for charger gaps etc.



VALVE

PIN LOCK



WRAP COVER



DIFFERENT KNEES  
CHARGER GAP





SYMES



## Customized covers for every prosthetic setup

We're proud to showcase the wide range of solutions we've created through close collaboration with clinicians and users around the world.

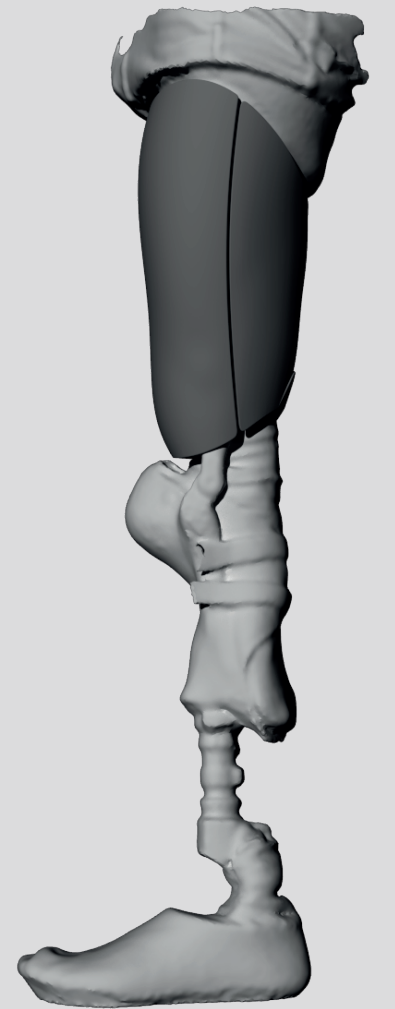
Our goal is to design covers for all types of prosthetic setups. Let's push boundaries and create the next one together!



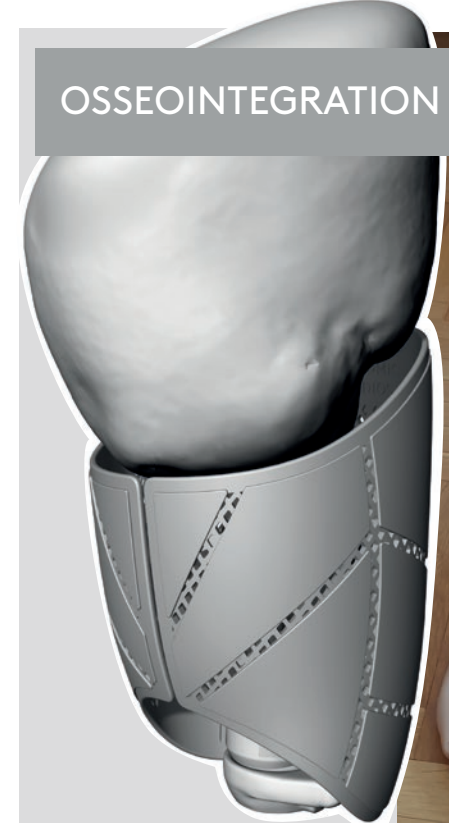
ASYMMETRIC TOP TRIM



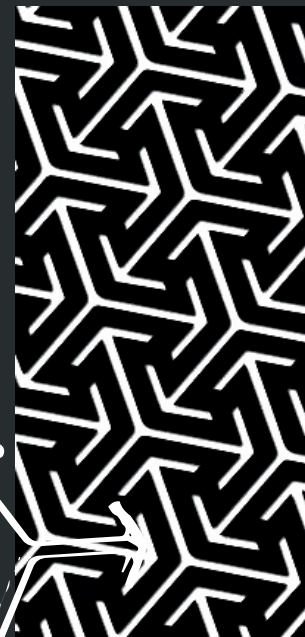
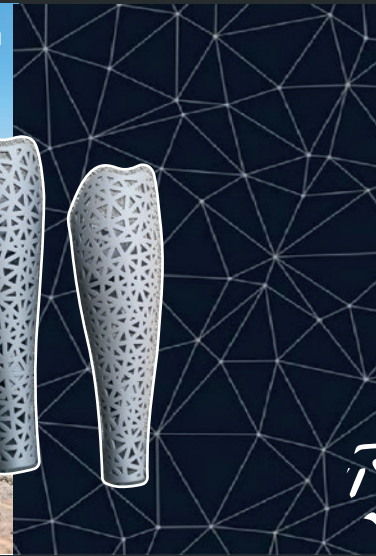
VAN NESS



OSSEOINTEGRATION







# Show your style



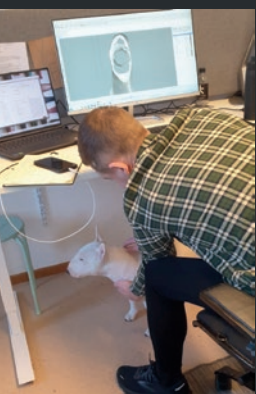
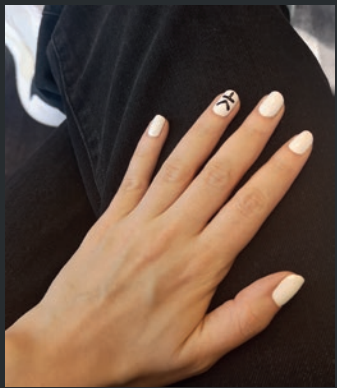
On our Instagram you'll find more inspiration and get all the latest news.

@anatomic.studios | #anatomicstudios

Tag us to show your style!











# ORDER FORMS

On the following spreads you can find order forms for our whole product range. These forms guide you through everything you need to place an order on our website or through our support email.



Scan for video on how to place an order.





# ORDER FORM

## ANATOMIC STUDIOS

Prosthetic Fashion for Everybody and Every Body

### BELOW KNEE( BK)

ORDER NO: \_\_\_\_\_

REF. NO: \_\_\_\_\_

#### COVER DETAILS

design: \_\_\_\_\_

colour: \_\_\_\_\_

#### MATERIAL CHOICE

☐ hard cover

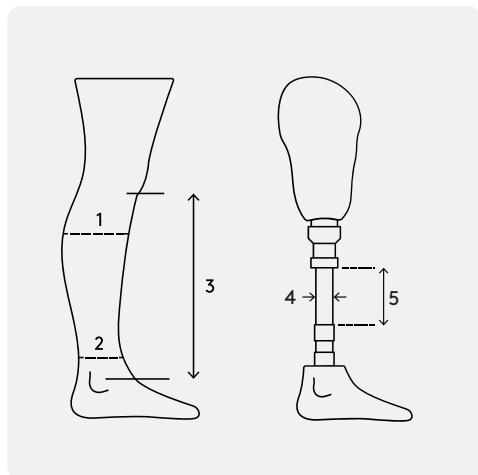
☐ flexible cover

#### PROSTHETIC SIDE

☐ right

☐ left

#### INFORMATION



Max circumference calf (1) \_\_\_\_\_

Min circumference ankle (2) \_\_\_\_\_

Length lower part of patella - lat malleolus (3) \_\_\_\_\_

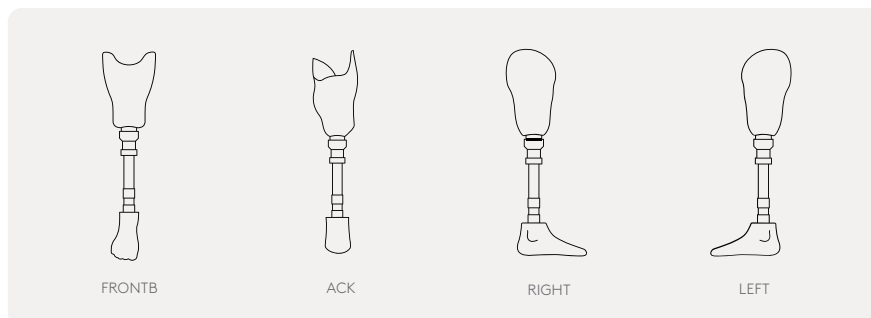
Prosthetic foot \_\_\_\_\_ Size (cm) \_\_\_\_\_

Pylon diameter (4) \_\_\_\_\_

Free pylon height (5) \_\_\_\_\_

Sleeve thickness (mm) \_\_\_\_\_ no sleeve ☐

#### PHOTOS



#### 3D-SCAN

Use your own scanning device or download our scanning app for iOS.



#### ADDITIONAL INFORMATION

---

---

---

Upload the information to our website [anatomic-studios.com](https://anatomic-studios.com)  
or e-mail us at [support@anatomic-studios.com](mailto:support@anatomic-studios.com)



# ORDER FORM

## ANATOMIC STUDIOS

Prosthetic Fashion for Everybody and Every Body

### ABOVE KNEE (AK)

ORDER NO: \_\_\_\_\_

REF. NO: \_\_\_\_\_

#### COVER DETAILS

design: \_\_\_\_\_

colour: \_\_\_\_\_

#### MATERIAL CHOICE

☐ hard cover

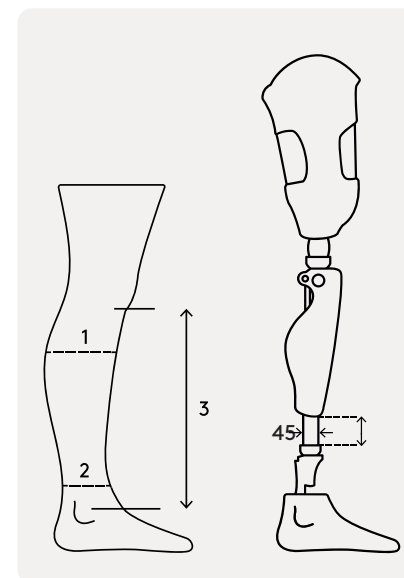
☐ flexible cover

#### PROSTHETIC SIDE

☐ right

☐ left

#### INFORMATION



Max circumference calf (1) \_\_\_\_\_

Min circumference ankle (2) \_\_\_\_\_

Length lower part of patella - lat malleolus (3) \_\_\_\_\_

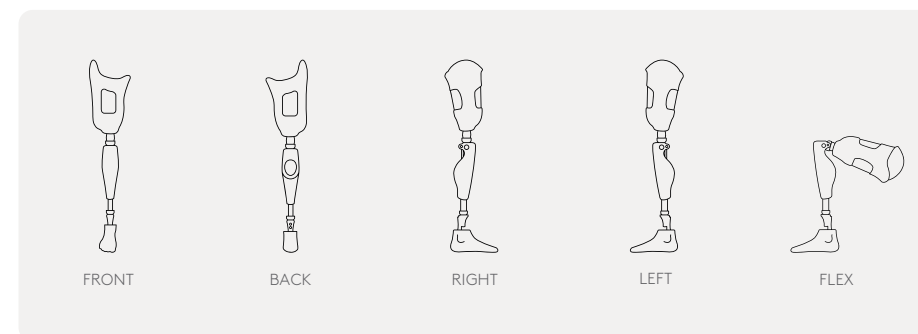
Prosthetic foot \_\_\_\_\_ Size (cm) \_\_\_\_\_

Prosthetic knee \_\_\_\_\_

Pylon diameter (4) \_\_\_\_\_

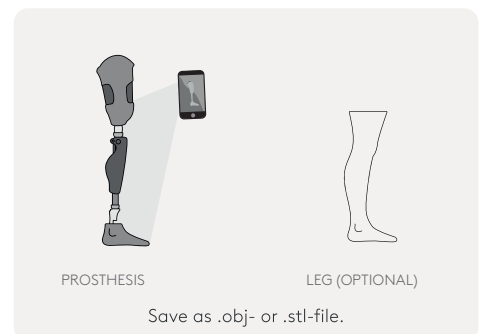
Free pylon height (5) \_\_\_\_\_

#### PHOTOS



#### 3D-SCAN

Use your own scanning device or download our scanning app for iOS.



#### ADDITIONAL INFORMATION

---

---

---

Upload the information to our website [anatomic-studios.com](https://anatomic-studios.com)  
or e-mail us at [support@anatomic-studios.com](mailto:support@anatomic-studios.com)





# ORDER FORM

## ANATOMIC STUDIOS

Prosthetic Fashion for Everybody and Every Body

### THIGH COVER (TC)

ORDER NO: \_\_\_\_\_

REF. NO: \_\_\_\_\_

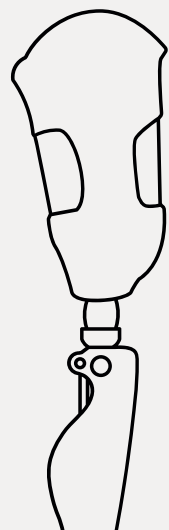
#### COVER DETAILS

design: \_\_\_\_\_ colour: \_\_\_\_\_

#### PROSTHETIC SIDE

☐ right ☐ left

#### INFORMATION



Prosthetic knee: \_\_\_\_\_

Prosthetic components between knee and socket  
(model name if possible): \_\_\_\_\_

Pylon diameter: \_\_\_\_\_ mm Pylon height: \_\_\_\_\_ mm ☐ No pylon

How is the rotation adapter used: \_\_\_\_\_

(ex: used when sitting to rotate 90 degrees externally)

☐ No rotation adapter

Need access to socket valve? yes ☐ no ☐

This order will be complemented with the order of leg cover yes ☐ no ☐

If yes, please take photos without any cosmesis/cover.

If no, please take photos and scan with existing lower leg cosmesis/cover.

#### PHOTOS



FRONT



BACK



RIGHT



LEFT

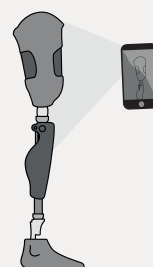


CLOSE-UP



FLEX

#### 3D-SCAN



Save as .obj- or .stl-file

Use your own scanning device or  
download our scanning app for iOS.

#### ADDITIONAL INFORMATION

---

---

Upload the information to our website [anatomic-studios.com](https://anatomic-studios.com)  
or e-mail us at [support@anatomic-studios.com](mailto:support@anatomic-studios.com)



# ORDER FORM

## ANATOMIC STUDIOS

Prosthetic Fashion for Everybody and Every Body

### ARM COVER

ORDER NO: \_\_\_\_\_

REF. NO: \_\_\_\_\_

#### COVER DETAILS

design: \_\_\_\_\_

colour: \_\_\_\_\_

#### PROSTHETIC SIDE

☐ right

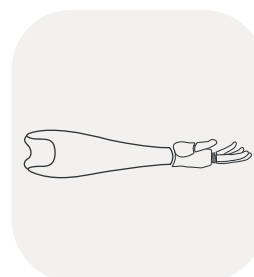
☐ left

#### PROSTHETIC HAND

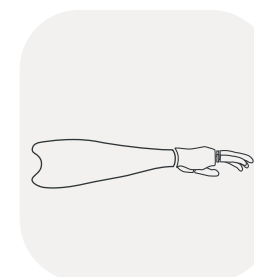
\_\_\_\_\_

GLOVE ☐ yes  
☐ no

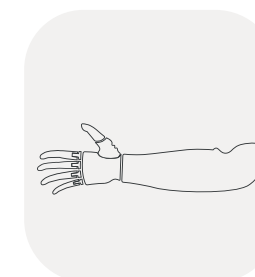
#### PHOTOS



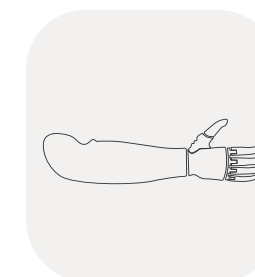
FRONT



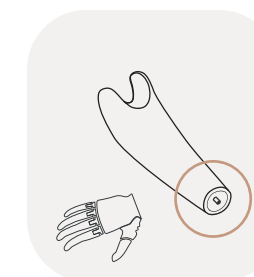
BACK



MEDIAL



LATERAL

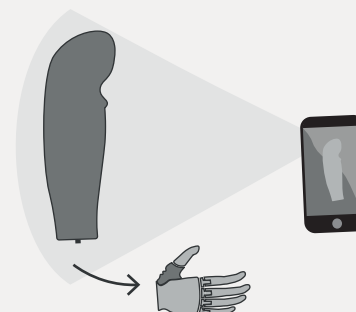


WRIST CONNECTOR

#### 3D-SCAN

Use your own scanning device or  
download our scanning app for iOS.

SCAN THE PROSTHESIS  
remove hand



Save as .obj- or .stl-file.

#### MEASUREMENTS

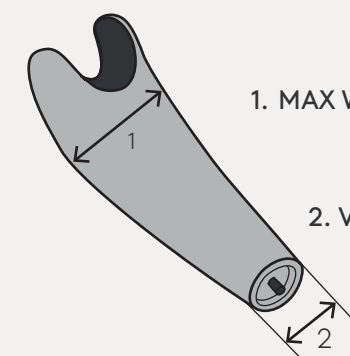
Take the following  
measurements for a better fit.

MEASURE THE SOCKET  
use a caliper



1. MAX WIDTH M-L (mm): \_\_\_\_\_

2. VERY END Ø (mm): \_\_\_\_\_



#### ADDITIONAL INFORMATION

---

---

Upload the information to our website [anatomic-studios.com](https://anatomic-studios.com)  
or e-mail us at [support@anatomic-studios.com](mailto:support@anatomic-studios.com)



Forget  
the rules,  
if it makes  
you happy  
- wear it!

## Contact

Anatomic Studios

Södra Promenaden 9  
21129 Malmö, Sweden

support@anatomic-studios.com  
+46 40 15 11 44



Welcome to continue exploring all  
designs and color options via our website.

[anatomic-studios.com](https://anatomic-studios.com)

